

Bellwork
Week 5-Q3

Directions:
Divide your sketchbook paper into 6 squares.

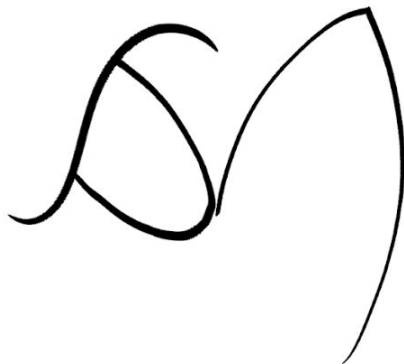
Monday:
**Combine the two things
below into one thing.**



Tuesday:
**Combine the two things
below into one thing.**



Wednesday:
**Copy the random scribble from
below, and turn it into a work of
art!**



Thursday
**Combine the two things
below into one thing.**



Friday:
**Copy the random scribble
from below, and turn it into a
work of art!**



W.A.P. S. Week 5

Essential Questions:

Day 1 -What challenge would I like to complete?

Day 2- How am I using my full 8.5 by 11 paper thoughtfully?

Day 3- Where is my light source coming from?

Day 4- Do I have midtone, highlights, and shade throughout my composition?

Day 5 - Is my art ready to be submitted?

What will I learn today:

Combine creative and technical knowledge to produce visually strong works of art. VA.68.O.1.3

How I will learn it? (Agenda)

-Continue the drawing challenge and complete the day's percentage goal

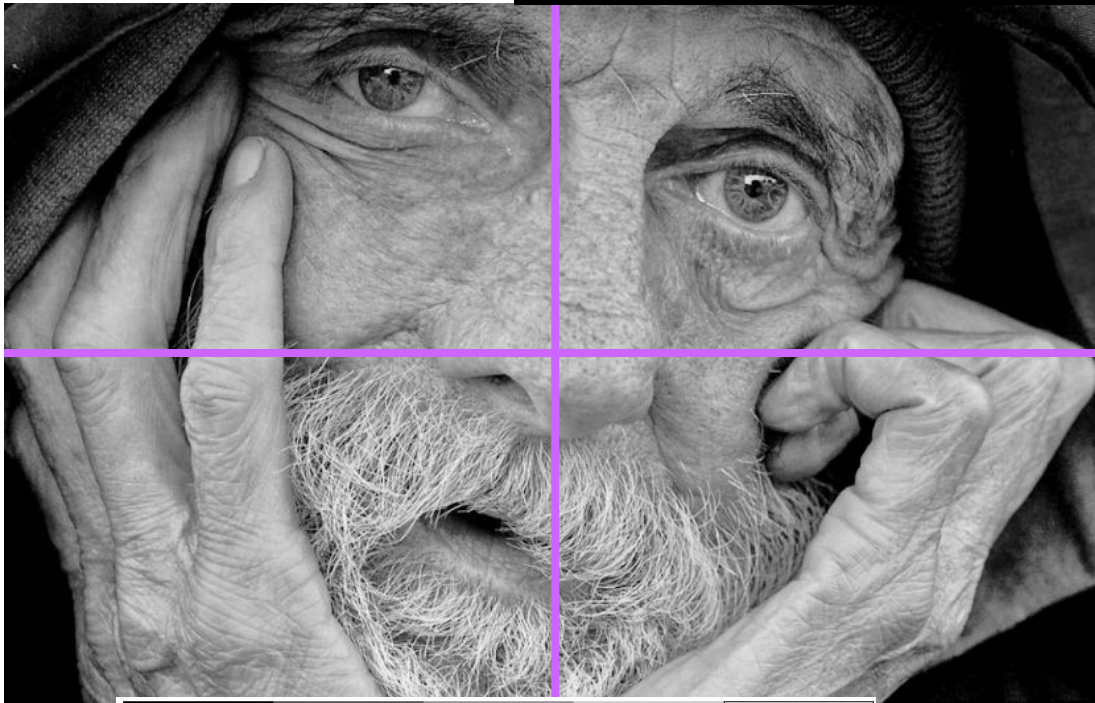
How do I know I learned it?

| | |
|----------------|--|
| Day 5-Deadline | Submit your drawing to Artsonia and grade yourself. |
| Day 4-100% | Complete the shading of your drawing and add details |
| Day 3-75% | Complete half of the shading inside your contour drawing |
| Day 2 - 50% | Complete the rest of the contour drawing |
| Day 1-25% | Complete at least half of your contour drawing |

Reminders:

- Find assignment info on katundra.com
- Submit assignments on Artsonia

Week 5 Drawing Challenge



Value 5 Value 4 Value 3 Value 2 Value 1

Character Challenge

Draw the character described below.

A prankster that eats doughnuts who's wearing a blazer.

Copy Challenge
Copy the image on the side as accurately as possible.



Example of a Character Sheet

General Rubric: (50 points)

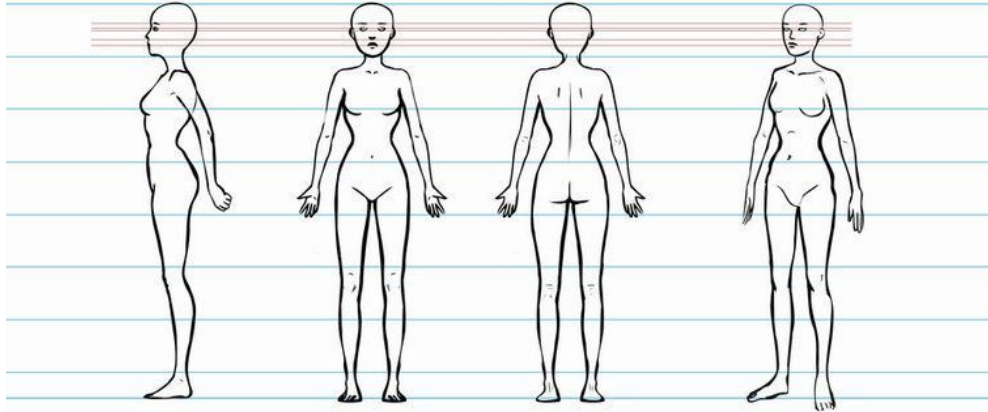
- ❑ Artwork is creative and original
- ❑ Artwork fills the 8.5 x 11 paper thoughtfully
- ❑ Artwork is shaded with pencil showing the 5 tones



- ❑ CRAFTSMANSHIP (neatness and precision)

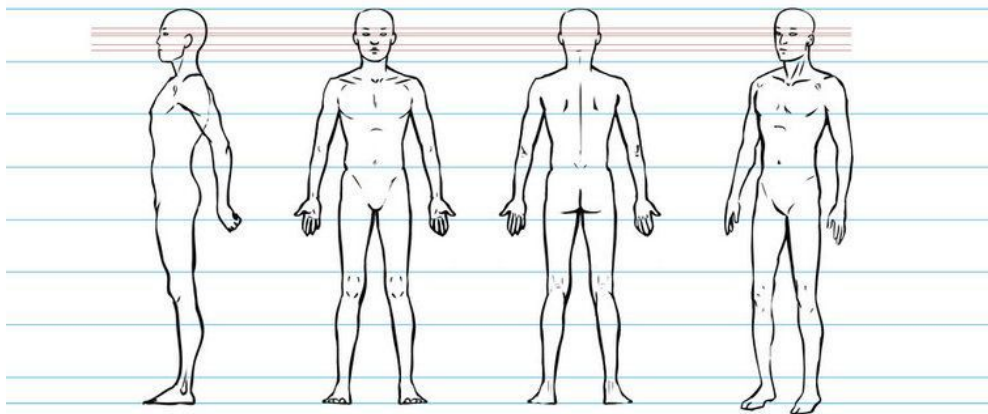
Reference sheet template

• Teen . Female



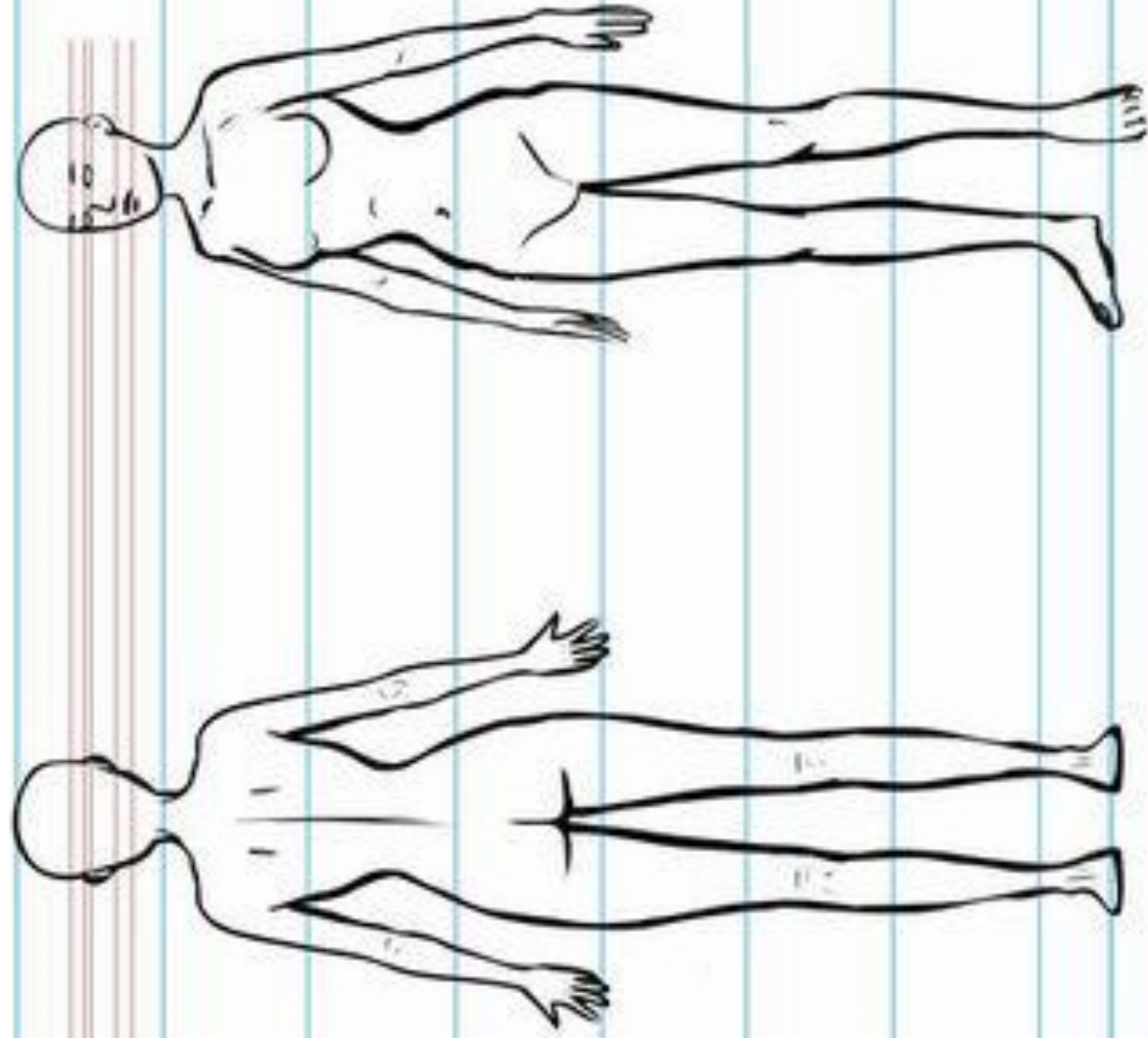
Reference sheet template

• Teen . Male



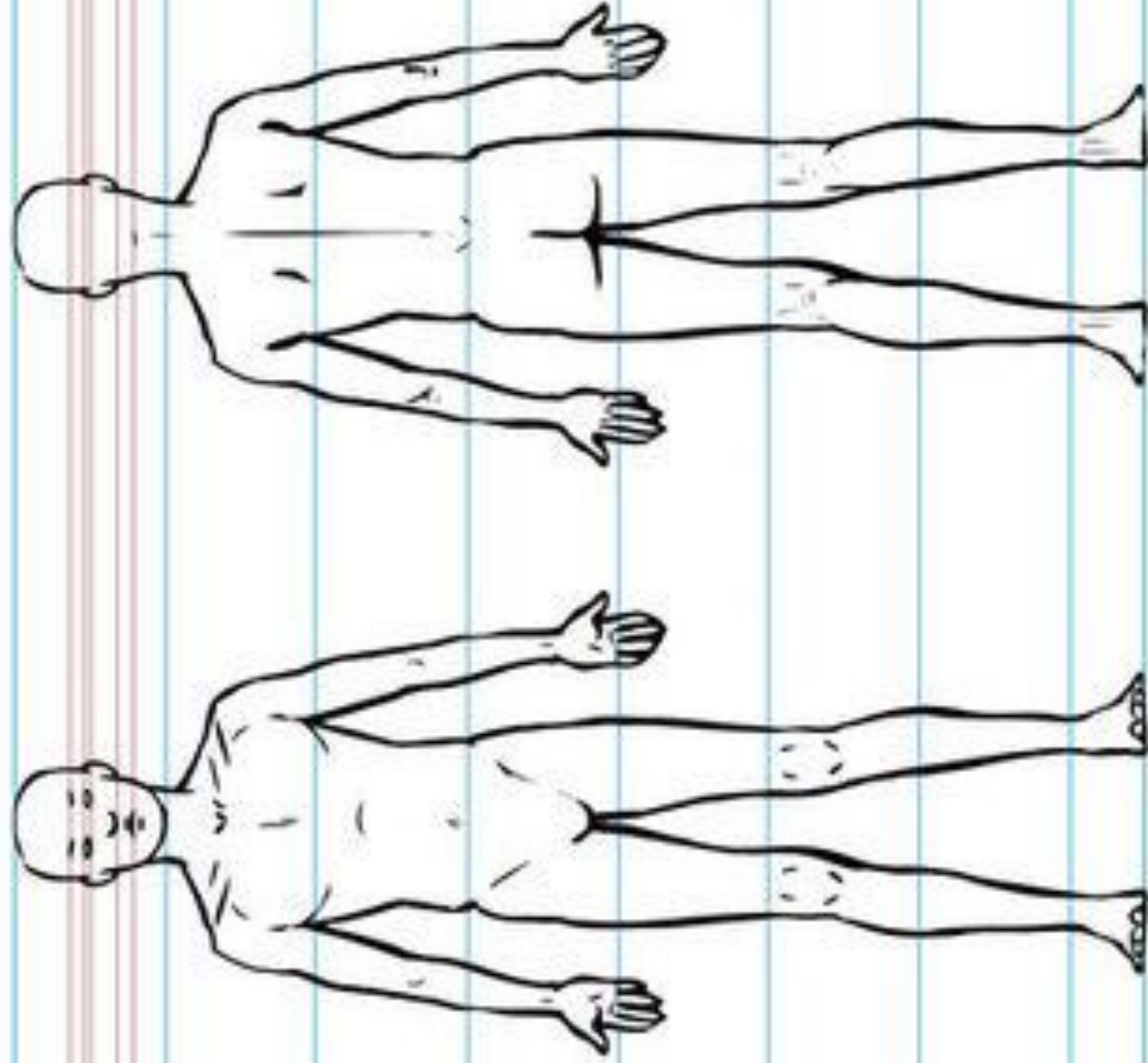
Reference sheet template

- Teen . Female



Reference sheet template

- Teen . Male



Reference sheet template

• Teen . Female

