

1. Entering Class Procedures:

Conversation: Level 1- Whisper

Help: Ask 3 before me

Activity:

1st-Grab the resource folders, materials, and trash can for your table.

2nd-Place your backpack in the appropriate location.

3rd-Take your needed materials.

4th- Be in your assigned seat, **before** the bell rings.

Movement: Materials Cart

Participation: Preparing for Class

Sound: Instructor's Music

*** Please be aware that failing to adhere to the above will result in completing a behavior sheet.**

2. Beginning of Class Procedures:

Conversation: Level -1-Whisper at your table

Help: Raise your Hand / Ask 3 before me

Activity: Use the Resource Folder to Complete the Bell Work for today. When you're done work on Weekly Sketchbook Prompt for this week. Choose a prompt from the 100 Sketchbook prompt list.

Movement: Materials Cart

Participation: Drawing and Writing

Sound: Instructor's Music

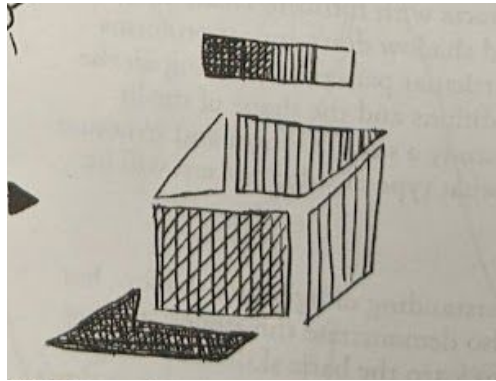
*** Please be aware that failing to adhere to the above will result in completing a behavior sheet.**

Bellwork
Seeing Values
Week 7-Q2

Directions:
Divide your sketchbook paper into 6 squares. For each day draw what you see.

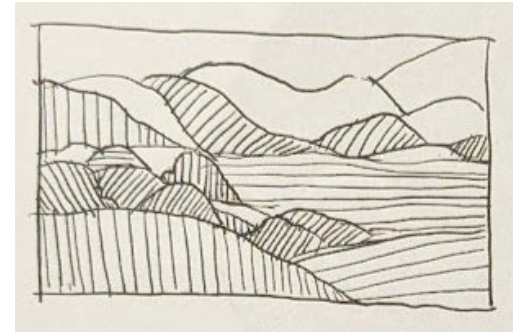
Resources by: Alphonso Dunn

Monday



Any subject can be seen in terms of value shapes. Make it a simple study of no more than 3 to 4 values.

Tuesday



Being able to simplify, distinguish, and group values is an important part of the shading process.

Wednesday



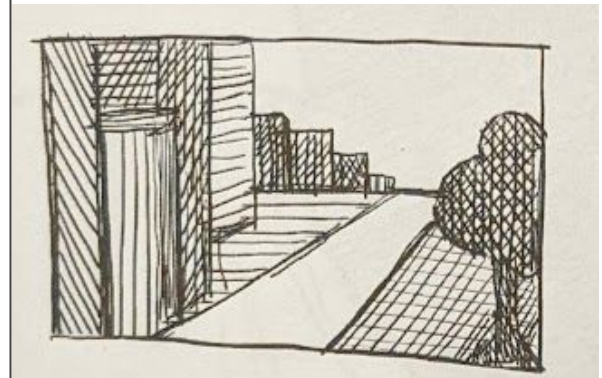
Start by practicing to see only in terms of values; areas of light and dark.

Thursday



See every part of the subject as having either a light, middle, or deep value.

Friday



As a result, you learn to focus on major value relationships and establish a solid foundation to begin rendering.

Give Me



5

5. Be Quiet
4. Hands Free
3. Be Still
2. Eyes on Speaker
1. Listen to Speaker

3. Instructional Procedures

Conversation: Level -0

Help: Raise your Hand

Activity: Receiving Instruction

Movement: None

Participation: Listening, Drawing and Writing

Sound: None

*** Please be aware that failing to adhere to the above will result in completing a behavior sheet.**

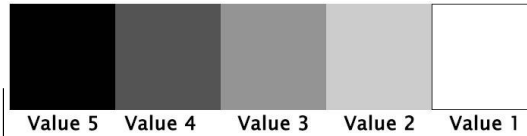
4. Independent Procedures

Conversation: Level -0

Help: Raise your Hand

Activity: Complete Agenda

Movement:



Participation: Drawing

Sound: None

*** Please be aware that failing to adhere to the above will result in completing a behavior sheet.**

Extra Credit Opportunities

Bring in the following:

-Black Foam Board (10 pts)- to put your artwork on

-Cardboard (10 pts)- to make your table easel

(Write what's in Red!)

W.A.P. S. Week 7

Friday 12-1-23

Daily Question: How to use the value scale to improve your art?

What will I learn today:

Combine creative and technical knowledge to produce visually strong works of art. VA.68.O.1.3

How I will learn it? (Agenda)

-Girl Portrait Day 10 of 10

-Due 12-1

-Submit the art for the Art Show into Artsonia and physically by Monday 12/4

When is the Art Show:

Thursday 12/7 @ 5-6 pm in front of the gym

How do I know I learned it?

When I can score at least a 3 on the scale

| | |
|---|---|
| 4 | I can correctly complete this activity innovatively. |
| 3 | I can correctly complete this activity independently |
| 2 | I can correctly complete this activity using peers assistance |
| 1 | I can correctly complete this activity using teacher assistance |

Reminders:

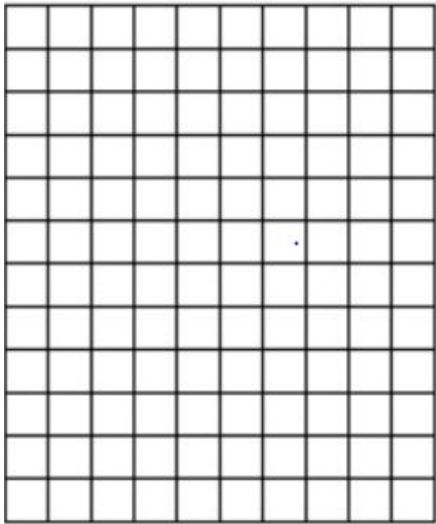
-Homework- Submit art you created already during this semester or a new 100 Sketchbook prompt, for the art show.

-Find assignment info on katundra.com

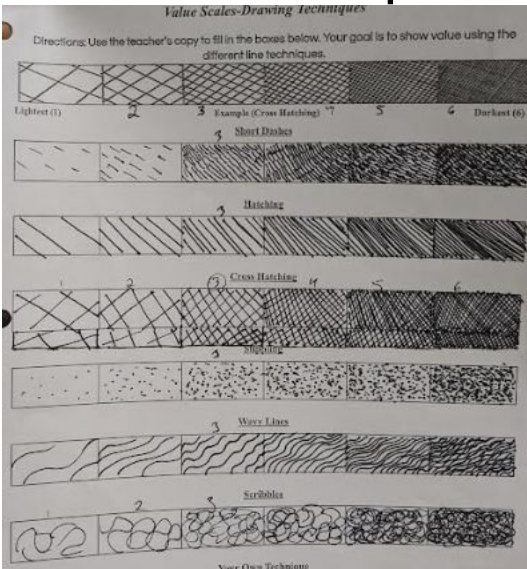
-Submit assignments on Artsonia

Project: Practice Grid Portrait of a Girl

Step 1: Create a grid



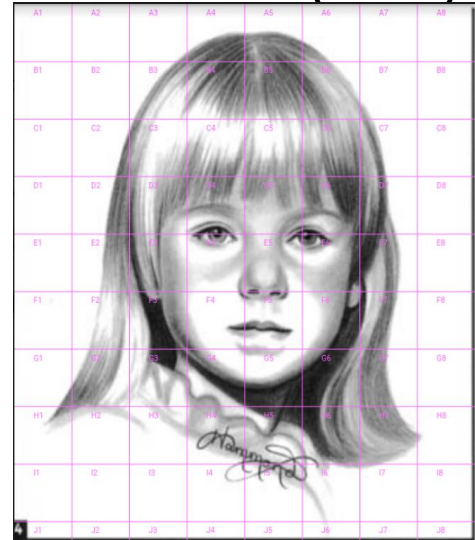
Step 3: Complete the value scale with pen



Step 2: Use the reference to draw the contour (outline) of the girl



Step 4: Choose one of the line techniques from your value worksheet and Use pen to fill in your contour drawing.



Step 5: Final:

Upload the portrait with the grid and then upload the portrait without the grid

Step 6: Art Show Art

When you're done work on the art you want to submit for the art show.

-Submit the art for the Art

Show into Artsonia and physically by Monday 12/4

4. Independent Procedures

Conversation: Level -2 -Regular level at your table

Help: Ask 3 Before Me at Your Table

Activity: Complete the Value Scale Worksheet, Upload it, then work on drawing the girl

Movement: Materials Cart and Restroom

Participation: Drawing/ Reading/ Writing

Sound: Instructor's Music

*** Please be aware that failing to adhere to the above will result in completing a behavior sheet.**

4. Independent Procedures

Conversation: Level -2 -Regular level at your table

Help: Ask 3 Before Me at Your Table

Activity: Complete the Value Scale Worksheet, Upload it, then work on drawing the girl

Movement: Materials Cart and Restroom

Participation: Drawing/ Reading/ Writing

Sound: Instructor's Music

*** Please be aware that failing to adhere to the above will result in completing a behavior sheet.**

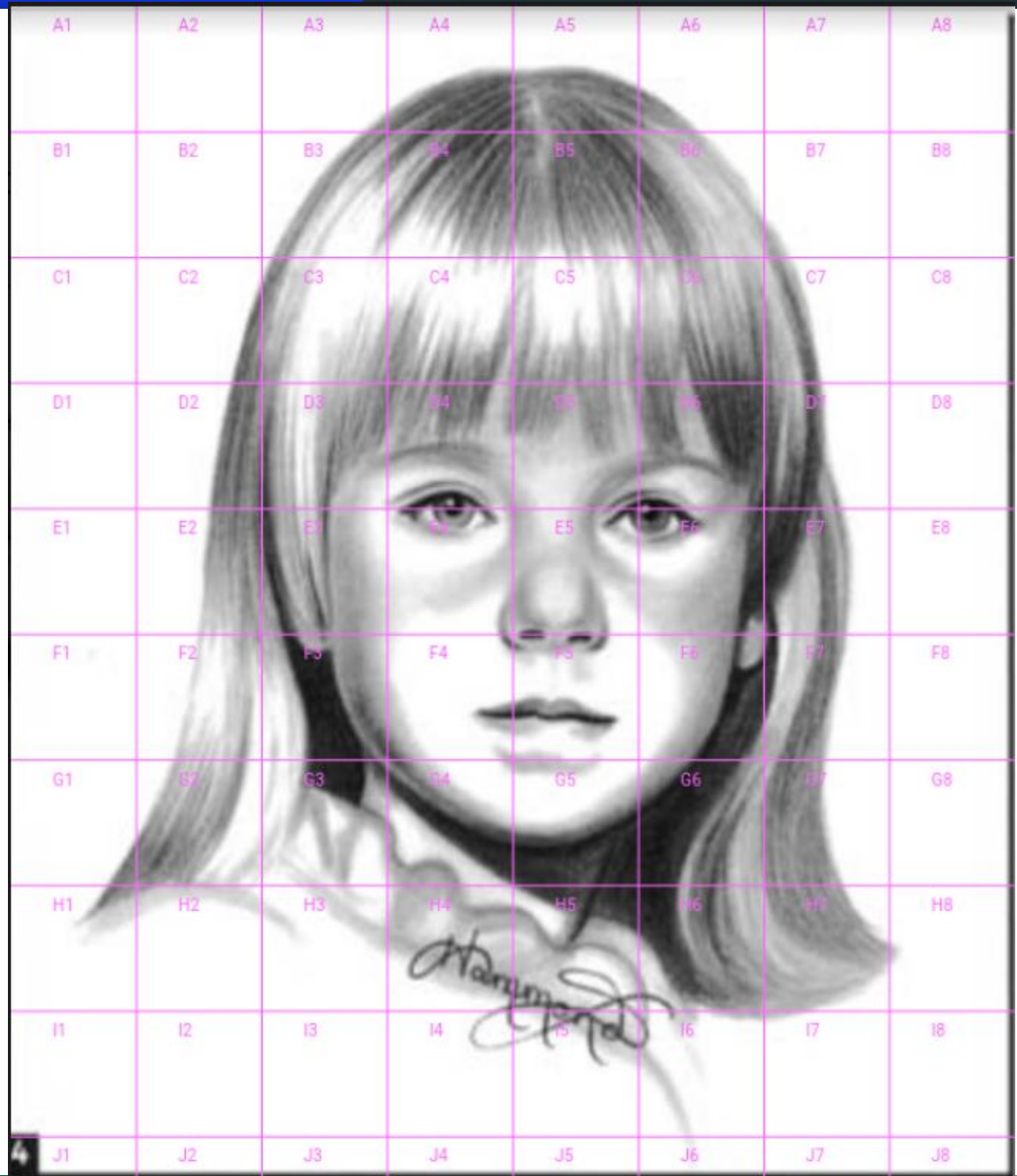
Practice Portrait:

1st - Draw the grid

2nd-Use the image on the side and draw the contour

3. Complete the value scale of the line technique you want to use on your final project.

4. Use the line technique to fill in the contour.



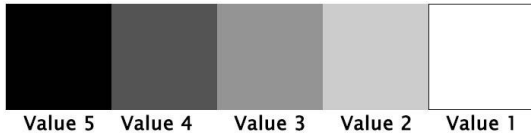
HW- 100 Sketchbook Prompts

Directions:

Choose one of the prompts from the 100 Sketchbook Prompts List which is found in your resource folder. Use the rubric below to complete the assignment effectively.

Rubric: (50 points)

- Artwork is creative and original (10 pts)
- Artwork fills the 8.5 x 11 paper thoughtfully (15pts)
- Artwork is shaded with pencil showing the 5 tones (15 pts)

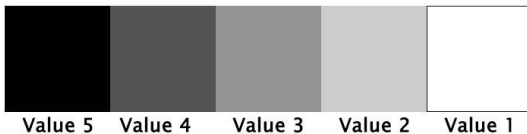


- CRAFTSMANSHIP (neatness and precision) (10 pts)

Rubric for Artwork for the Art show

Rubric:

- Artwork is creative and original
- Artwork fills the 8.5 x 11 paper thoughtfully
- Artwork is shaded with pencil or color showing the 5 tones



- CRAFTSMANSHIP (neatness and precision)
- Include a technique you learned from this semester

Who will be the subject of your grid portrait?

Directions:

Think about a person you are thankful for. Take a picture of them that only shows the shoulders up. Make sure you have good contrast, darks and lights. Submit the grayscale image to Artsonia.

What You Will Do: (5 MINS)- Reflection

| | |
|---|---|
| Conversation | At a Level-0. |
| Help | You can raise your hand to receive help on the... |
| Activities | Reflection |
| <p>1st</p> <p>On your Weekly Art Participation Sheet Under the Reflection Section</p> <p>Tell me what you learned or did in details using a complete sentence.</p> | <p>2nd</p> <p>Where do you stand with meeting the standard for today:</p> <p>4-I can correctly complete this activity innovatively.</p> <p>3-I can correctly complete this activity independently</p> <p>2-I can correctly complete this activity using peers assistance</p> <p>1-I can correctly complete this activity using teacher assistance</p> |
| Movement | None |
| Participation | Writing |

6. *Clean-Up Procedures*

Conversation: Level -1

Help: Ask 3 Before Me

Activity: *Art Advisor* - provide guidance for work,

Materials manager- make sure materials are put away in the appropriate location, ***Sketchbook***

Supervisor- switch out the sketchbook holder for the next period, ***Waste Watchdog*** - make sure the table and floor is clean.

Movement: Materials Zone and Backpack Zone

Participation: Cleaning

Sound: None

*** Please be aware that failing to adhere to the above will result in completing a behavior sheet.**

Clean-Up

What You Will Do: (3 MINS)

| Conversation | At a Level-1. | | | | | | | | | | |
|---|---|----------------|--|---|---------------|---|-------------------|---|-----------------------|---|----------------|
| Help | You can raise your hand to receive help on the... | | | | | | | | | | |
| Activities | Clean-Up Time | | | | | | | | | | |
| <table border="1"><thead><tr><th colspan="2">ARTISTS DUTIES</th></tr></thead><tbody><tr><td>a</td><td>ART ORGANIZER</td></tr><tr><td>b</td><td>MATERIALS MANAGER</td></tr><tr><td>c</td><td>SKETCHBOOK SUPERVISOR</td></tr><tr><td>d</td><td>WASTE WATCHDOG</td></tr></tbody></table> | | ARTISTS DUTIES | | a | ART ORGANIZER | b | MATERIALS MANAGER | c | SKETCHBOOK SUPERVISOR | d | WASTE WATCHDOG |
| ARTISTS DUTIES | | | | | | | | | | | |
| a | ART ORGANIZER | | | | | | | | | | |
| b | MATERIALS MANAGER | | | | | | | | | | |
| c | SKETCHBOOK SUPERVISOR | | | | | | | | | | |
| d | WASTE WATCHDOG | | | | | | | | | | |
| Movement | Moving around the tables | | | | | | | | | | |
| Participation | Cleaning | | | | | | | | | | |