

# Bellwork

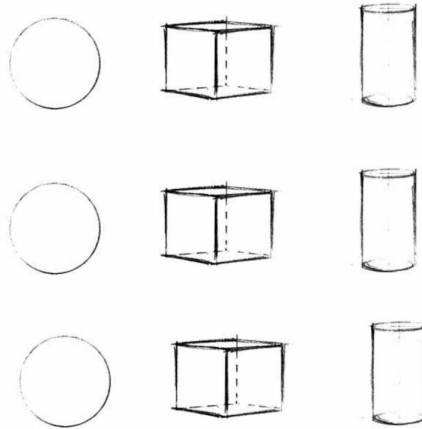
## Week 6-Q3

### Directions:

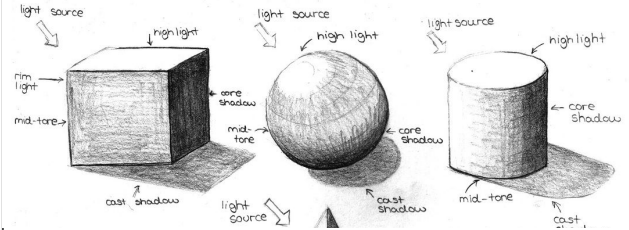
Divide your sketchbook paper into 6 squares.

### Monday:

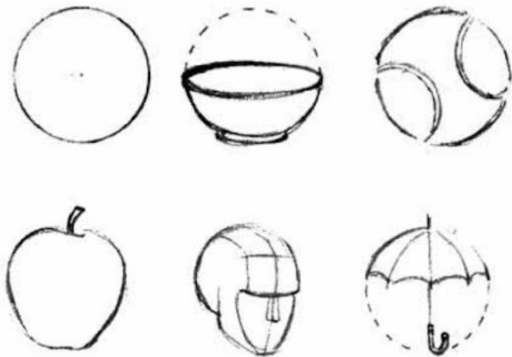
Draw the 3 forms below 3 different times.



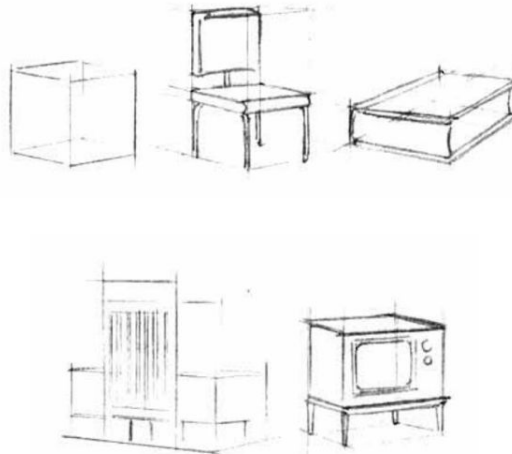
### Tuesday:



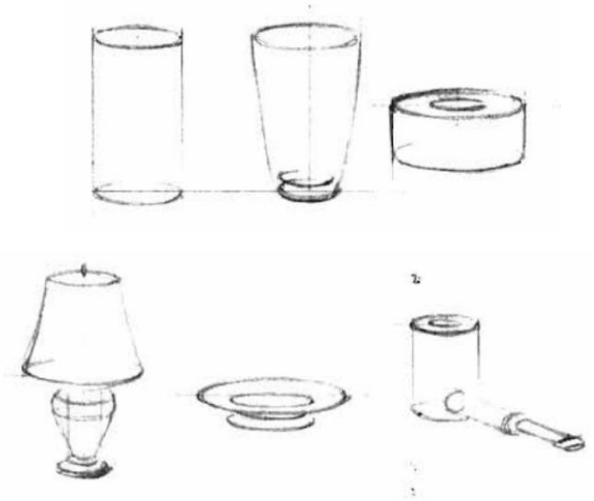
### Wednesday:



### Thursday



### Friday:



# W.A.P. S. Week 6

## Essential Questions:

Day 1 -What challenge would I like to complete?

Day 2- How am I using my full 8.5 by 11 paper thoughtfully?

Day 3- Where is my light source coming from?

Day 4- Do I have midtone, highlights, and shade throughout my composition?

Day 5 - Did I meet my client's criteria?

## What will I learn today:

Combine creative and technical knowledge to produce visually strong works of art. VA.68.O.1.3

## How I will learn it? (Agenda)

-Start the drawing challenge and complete the day's percentage goal

## How do I know I learned it?

|                |  |
|----------------|--|
| Day 5-Deadline | Reflect and peer grade your art. Submit art and rubric to Artsonia.                  |
| Day 4-100%     | Complete the shading of your drawing and add details                                 |
| Day 3-75%      | Complete half of the shading inside your contour drawing                             |
| Day 2 - 50%    | Complete the rest of your picture plane with the contour drawing                     |
| Day 1-25%      | Complete a quick sketch and at least 1/3rd of the picture plane w/ a contour drawing |

## Reminders:

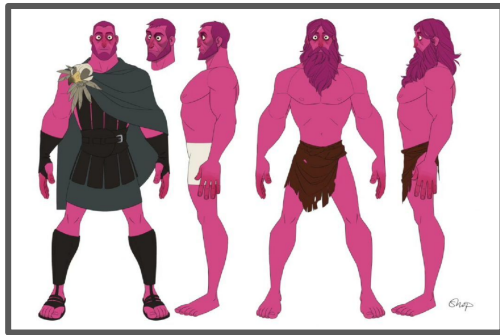
- Find assignment info on [katundra.com](http://katundra.com)
- Submit assignments on Artsonia

# Week 6 Drawing Challenge

## A. Character Challenge

*Directions: Create a Character Sheet for the character described below. Provide at least 2 different looks.*

**A fairy tale character who is always mixing the wrong potions working out.**

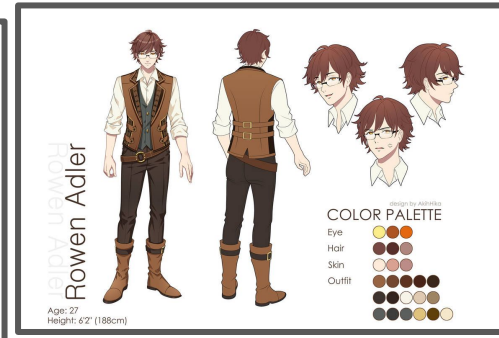


**or**

## B. Character Challenge

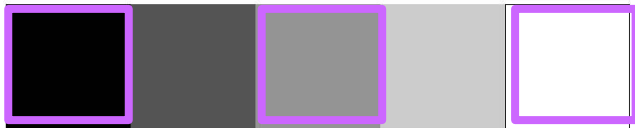
*Directions: Create a Character Sheet for the character described below. Provide at least 2 different looks.*

**A thief that is laughing so hard they have trouble breathing who's wearing a biker outfit.**



## General Rubric: (100 points)

- Creativity-Artwork** is creative and original
- Composition-Artwork** fills the 8.5 x 11 paper thoughtfully
- Value-Artwork** is shaded showing at least the 3 main tones: highlight, midtone, and the core shadow

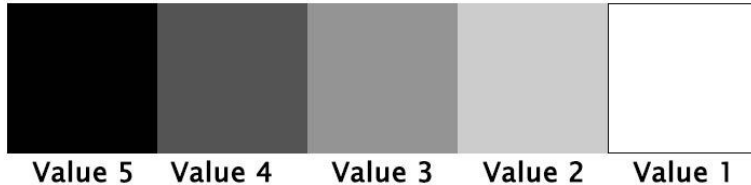


- CRAFTSMANSHIP** (neatness and precision)

## Example of Character Sheets

## General Rubric: (50 points)

- ❑ Artwork is creative and original
- ❑ Artwork fills the 8.5 x 11 paper thoughtfully
- ❑ Artwork is shaded with pencil showing the 5 tones



- ❑ CRAFTSMANSHIP (neatness and precision)

## Project Rubric

**Directions:** Grade your project. Tape the rubric to the back of your artwork, as a hinge. Take a picture and submit your art and rubric to [@caojia](#).

Name: \_\_\_\_\_ Grader's Name: \_\_\_\_\_ Date: \_\_\_\_ Per: \_\_\_\_



|   | 0-None | 1-Below | 2-Approaching | 3-Met | 4-Above |
|---|--------|---------|---------------|-------|---------|
| <b>Creativity or Representational:</b><br>Generated different ideas, trying unusual combinations and demonstrated problem solving skills.<br>Or<br>Replicated the copy challenge as accurately as possible.                           | 0      | 12      | 15            | 17    | 20      |
| <b>Composition:</b><br>Use the 8.5 by 11 paper thoughtfully. Every third of the art composition has subject matter dedicated to the topic.  | 0      | 12      | 15            | 17    | 20      |
| <b>Value:</b><br>Artwork is shaded showing at least the three main tones: highlight, mid-tone, and core shadow.   | 0      | 12      | 15            | 17    | 20      |
| <b>Craftsmanship:</b><br>The artwork was beautiful and patiently done with attention to detail; it was a clean presentation without smudges, fingerprints, extraneous marks, and tears.   | 0      | 12      | 15            | 17    | 20      |
| <b>Focus:</b><br>The project was continued until it was as complete as the student could make it; gave it effort far beyond that was required, took pride in going well beyond the requirement to successfully show the main concept. | 0      | 12      | 15            | 17    | 20      |
| <b>Total Score (100)</b>  |        |         |               |       |         |

Directions: Complete the following questions in complete sentences by restating the question with your answer.

What did you do to make your art different from others or representational (copy challenge)?

---



---

Did your artwork fill the 8.5 x 11 paper thoughtfully? (Every third of the art composition has subject matter dedicated to the topic.)

---



---

Did your artwork have shading that shows at least 3 tones: highlight, mid-tone, and core shadow?

---



---

Did you focus on meeting the goal each work session to complete the project successfully?

---

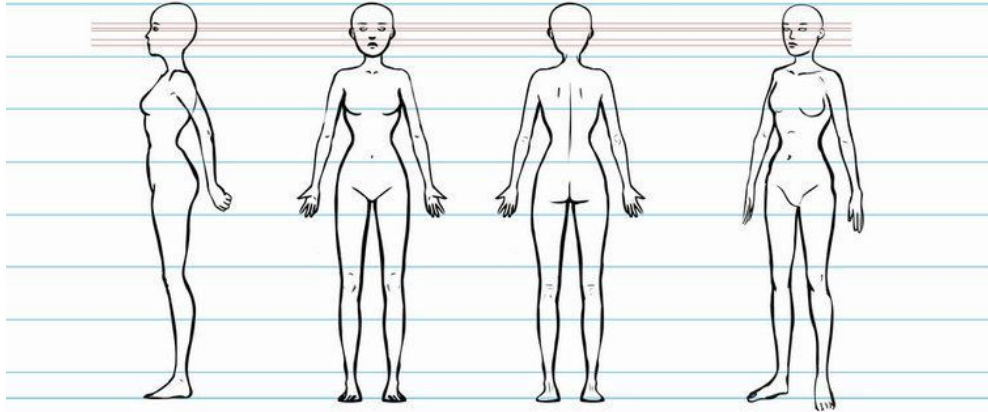


---



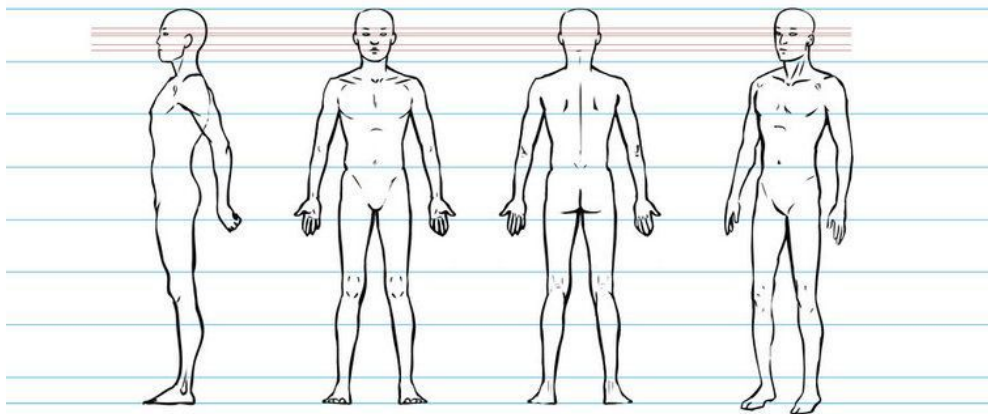
## Reference sheet template

• Teen . Female



## Reference sheet template

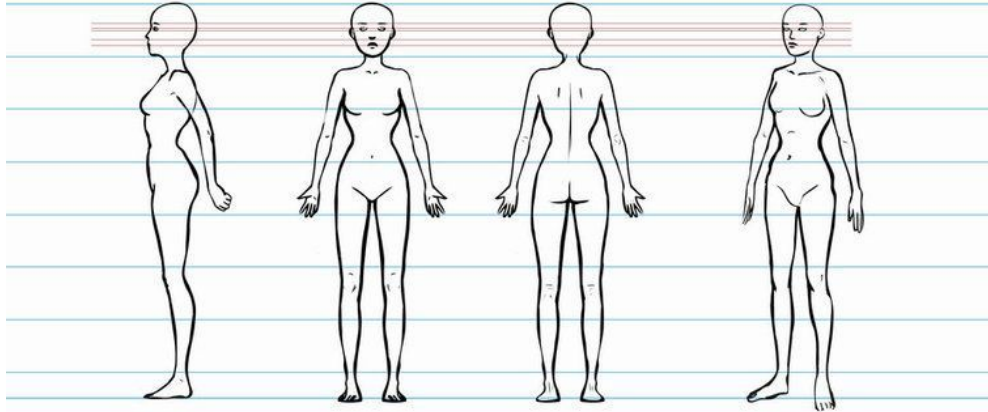
• Teen . Male





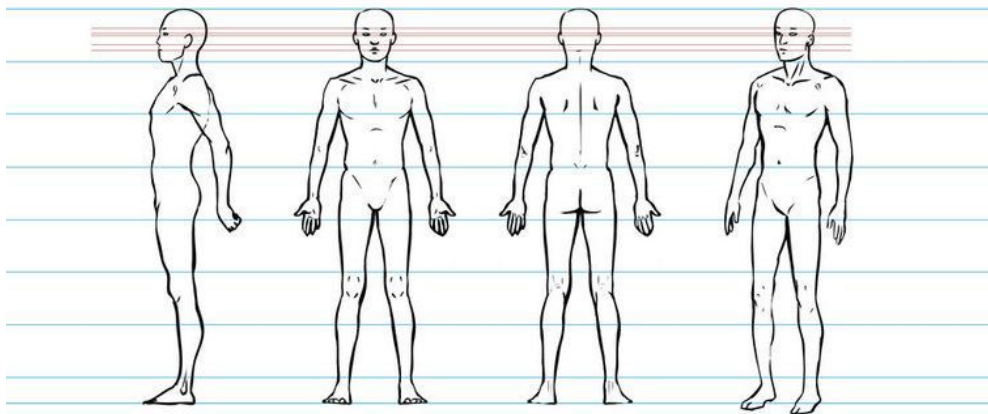
## Reference sheet template

• Teen . Female



## Reference sheet template

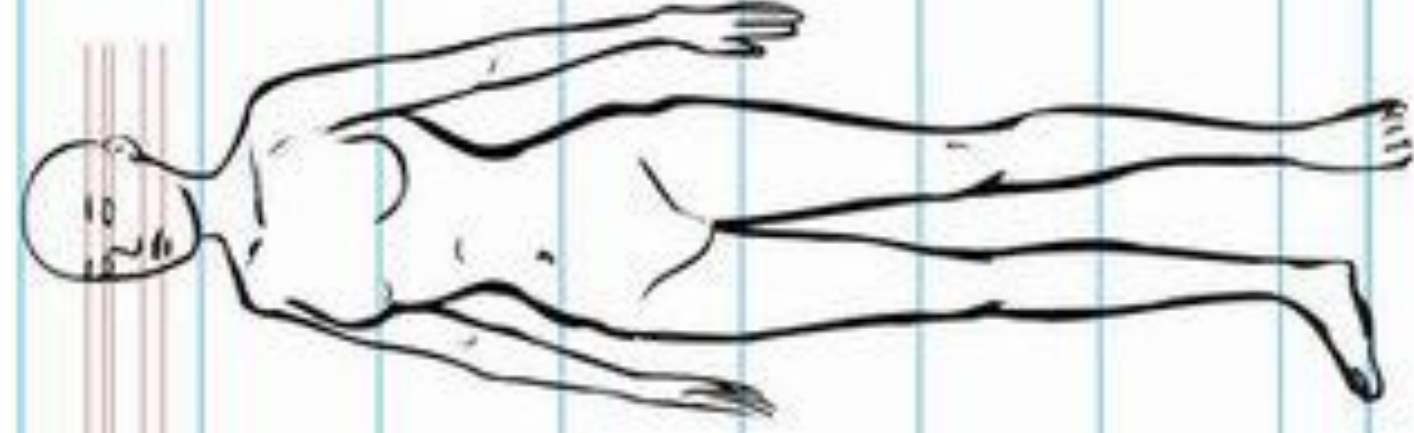
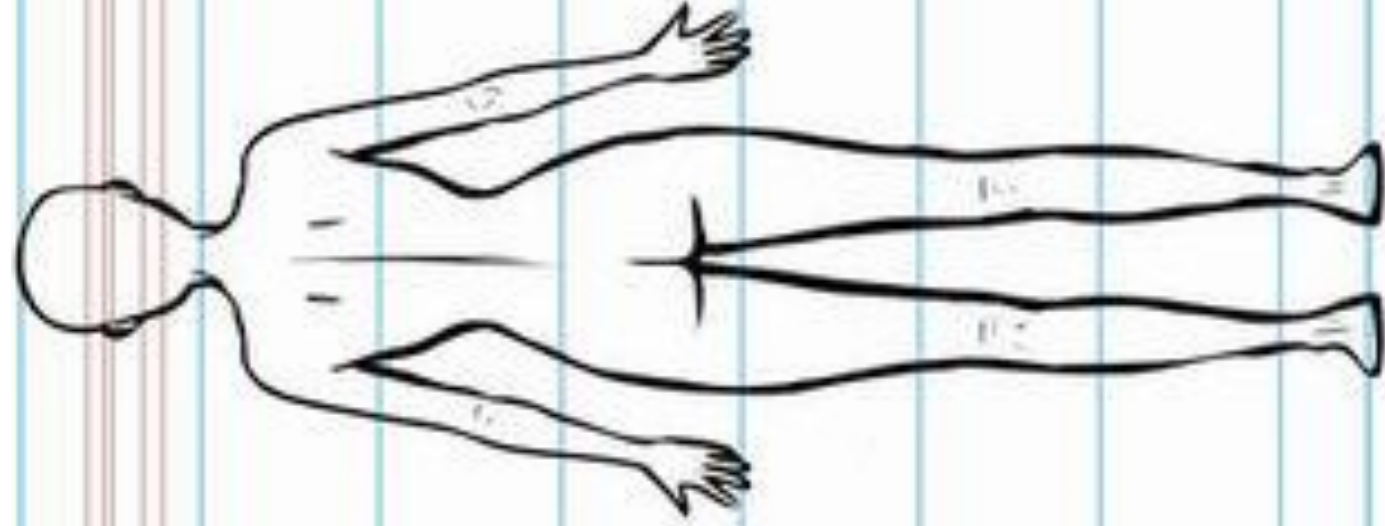
• Teen . Male





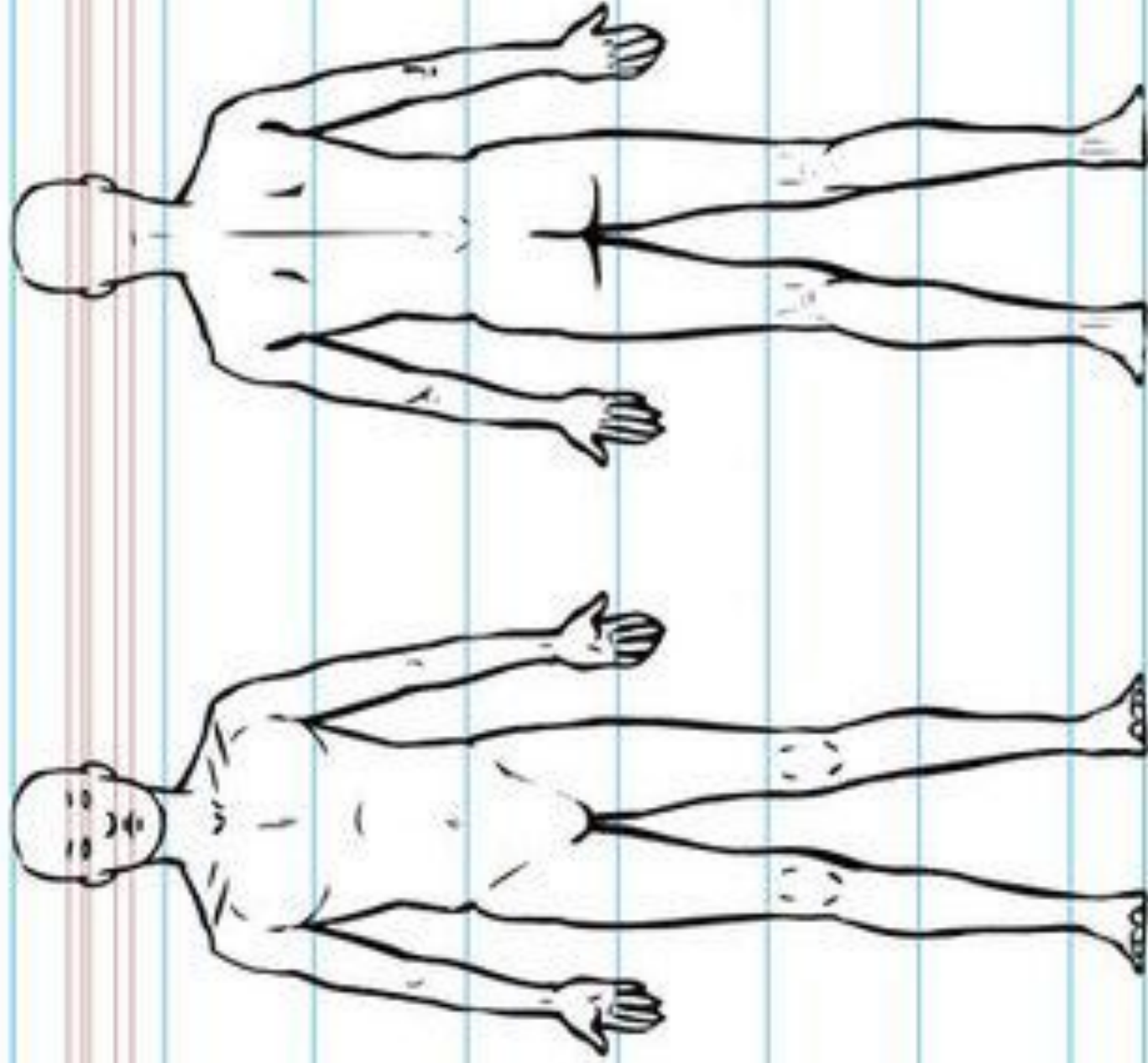
## Reference sheet template

- Teen . Female



# Reference sheet template

- Teen . Male



# Reference sheet template

• Teen . Female

