

# Bellwork Paper Format

**1. Make sure your paper is landscape. On the back write your Name, Date, Per, and Table # in the top right corner**

**2. Draw two vertical lines to divide your paper into three columns**

**3. Then halfway down the paper draw a horizontal line**

**4. Label each box with the following info:**

**1st**

--

**2nd**

--	--	--

**3rd**


**4th**

<b>Mon. Describe</b>	<b>Bellwork -Week</b> <b>Title:</b> <b>Artist:</b> <b>Date:</b>	<b>Tues. Analyze</b>
<b>Wed. Interpret</b>	<b>Thurs. Draw</b>	<b>Fri. Judge</b>

## What You Will Do: (5 MINS)

Conversation	Level-1
Help	Raise Your Hand
Activities	Bellwork

Week 5 -Tuesday 11-9-21

### Directions:

**Analyze** this work. How is the work organized using the elements of art and the principles of design. How do the elements and principles of design work together? How does the artist use the elements and principles to get your attention? What is the composition?

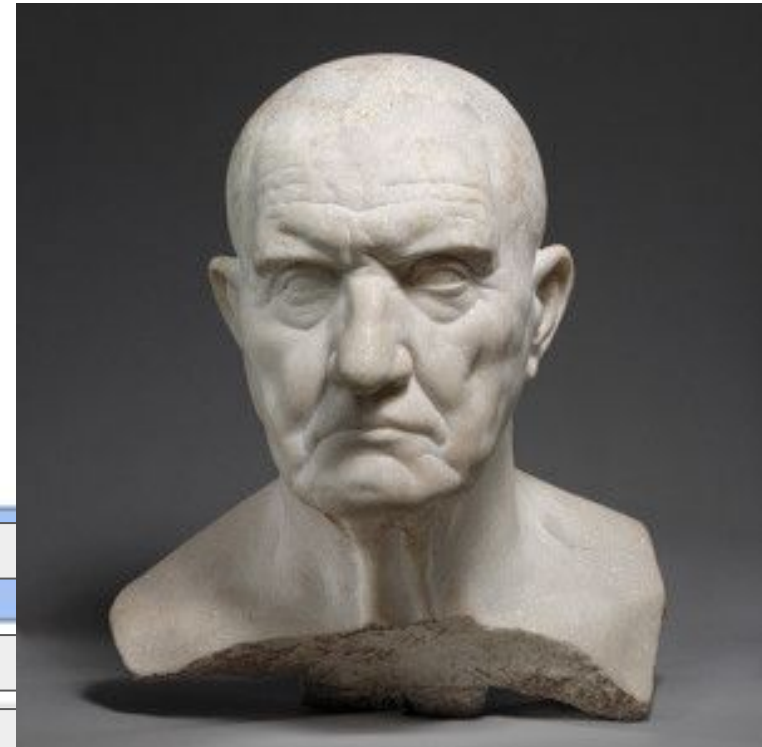
Direcciones:

Analiza este trabajo. Cómo se organiza el trabajo utilizando los elementos del arte y los principios del diseño. ¿Cómo funcionan juntos los elementos y principios del diseño? ¿Cómo utiliza el artista los elementos y principios para llamar su atención? ¿Cuál es la composición?

**Title:** "Portrait Bust of a Man"

**Artist:** Republican Roman

**Year Made:** 1st Century BC



Movement	Materials Counter
Participation	Writing
Sound	Instructor's Music

**(Write what's in Red!)**

## W.A.P.S Week 5 q2

Project: Form

---

Tuesday 11-9-21

EQ (Essential Question):

What is the difference between shape and form?

What will I learn today:

The student will learn the differences between shape and form. The student will learn the basic shadow structure on an object and will learn how to apply this structure to objects in a drawing.

How I will learn it? (Agenda)

-Watch Video on Form

-Start Form Exercise

How do I know I learned it?

If you can score at least a 3 on the scale for the following:

How did you work during the activity

1 Relied on Teacher's Assistance,

2 Relied on Peers Assistance,

3 Independently,

4 Innovatively (You understand and you can help someone else)

Reminders:

Pay Art Lab Fee of \$25 by Oct. 8th.

Art Club Meeting 2-3 pm on Tuesdays

Find make-up work at

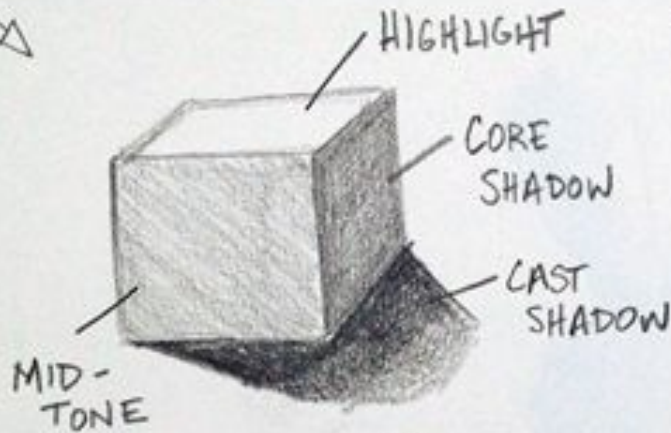
[katundra.com>classroom>2d1](http://katundra.com/classroom/2d1)>the date you need

Upload it at Artsonia

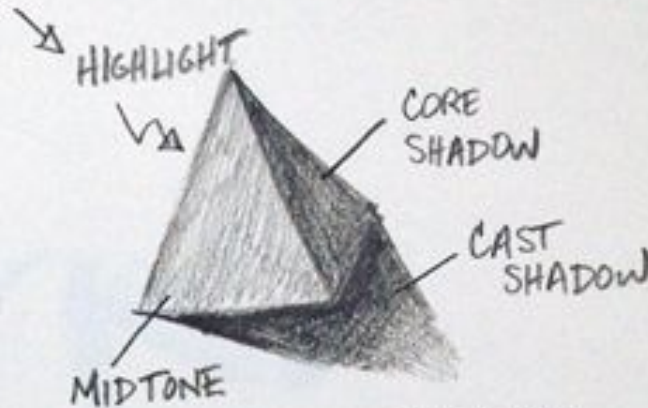
# You Have 3 mins to Upload Your Work to Artsonia

1. Either Download the Artsonia App on your phone or Use the Web Browser and type in Artsonia.com
2. Click on ARTIST
3. Type in the Access Code **TPKF-ZSSZ**
4. Click on All Students
5. Enter Your Name
6. Add Art
7. Select the name of the assignment: **wk5\_11-9\_Bellwork**
8. Take a Picture
9. Crop the image if needed
10. Title the work
11. Type the Artist Statement
12. Submit to Teacher

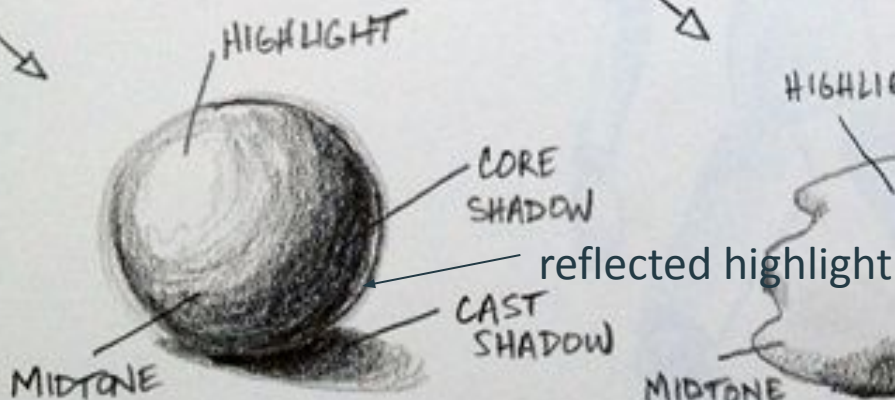
# Form Exercise



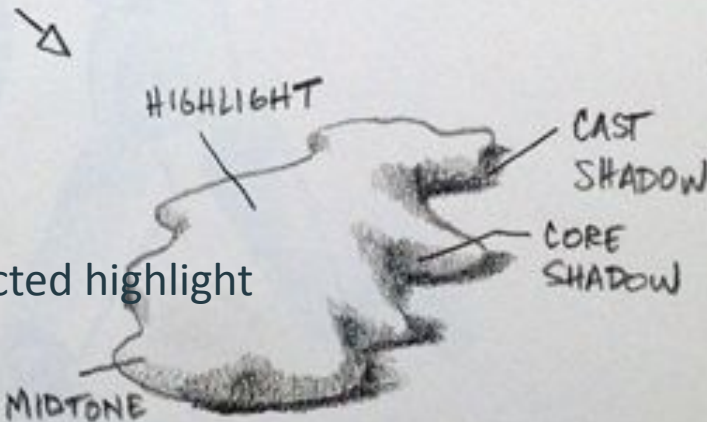
SQUARE → CUBE



TRIANGLE → PYRAMID



CIRCLE → SPHERE



ORGANIC SHAPE

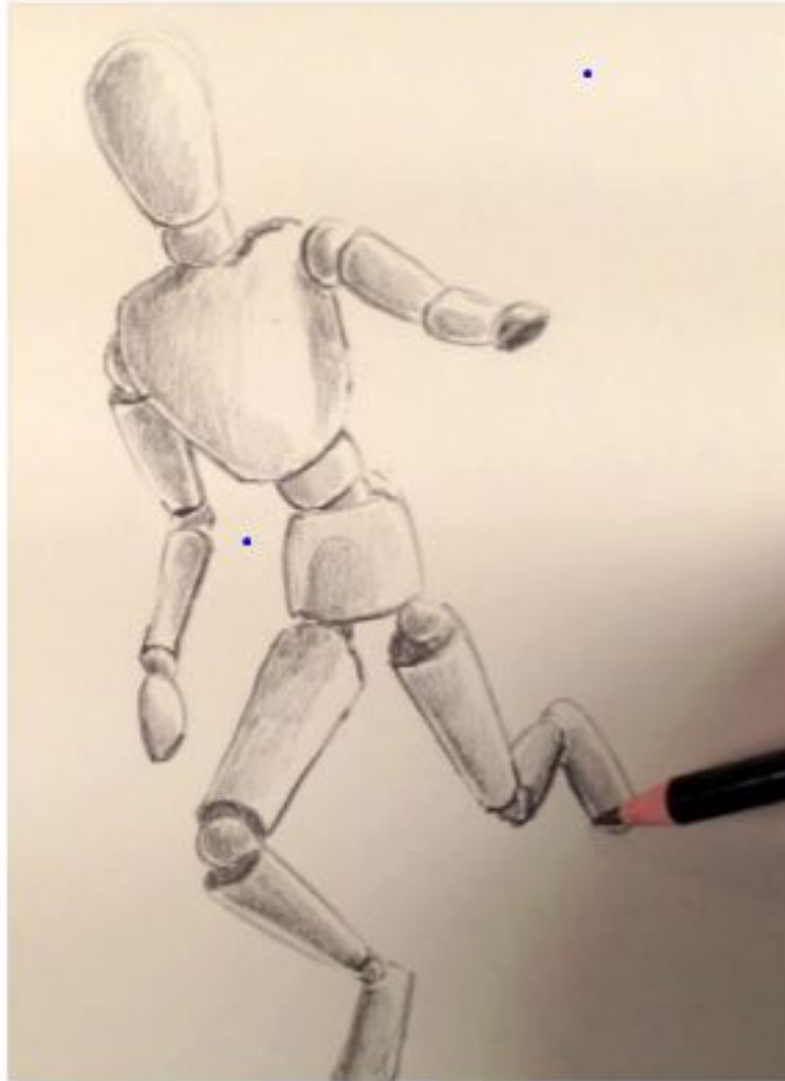
## Directions:

1. In your sketchbook copy the forms and label them. (Your paper should look just like this example.)

2. When your done upload your work to Artsonia under the assignment name:

11 9 Form Exercise

# 11 9 Form Exercise pt 2



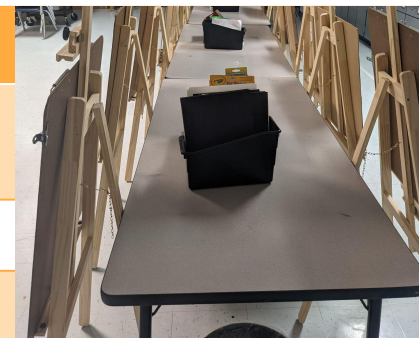
# You Have 3 mins to Upload Your Work to Artsonia

1. Either Download the Artsonia App on your phone or Use the Web Browser and type in Artsonia.com
2. Click on ARTIST
3. Type in the Access Code **TPKF-ZSSZ**
4. Click on All Students
5. Enter Your Name
6. Add Art
7. Select the name of the assignment: **wk5\_11\_9 Form Exercise**
8. Take a Picture
9. Crop the image if needed
10. Title the work
11. Type the Artist Statement
12. Submit to Teacher

# Clean-Up

## What You Will Do: (3 MINS)

Conversation	At a Level-1.
Help	Ask 3 Before Me
Activities	Clean-Up Time



### ARTISTS DUTIES

ARTISTS DUTIES	
1	ART ADVISOR
2	MATERIALS MANAGER
3	SKETCHBOOK SUPERVISOR
4	WASTE WATCHDOG

### Cleaning Checklist

- Sketchbook Holder for the next period is out
- Material's Bin is in the center of the table with the materials in it.
- Binders placed under the Material's Bin
- Trash and loose paper should be in the garbage

Movement	Moving around the tables
Participation	Cleaning